

SOUTH VALLEY CIVIC THEATRE'S
OUT OF ORDER



Written by
Ray Cooney

Directed by
JoAnna Evans

Produced by
Scott Lynch
& Marie Haluza

Performances

Fridays &
Saturdays, 8 pm
March 9, 10, 16, 17,
23, 24, 30, 31

Sunday Matinees
2:30 pm
March 18, 25



By special arrangement
with Samuel French, Inc.

**Congratulations to the cast & crew
of Out Of Order! Break a leg!**

Ready for a fresh start?
Are you considering selling
your home?

Or is it time to purchase
a new home?

Whatever your Real Estate
needs are, I can help!

Experience matters!



Robin Bezanson, Realtor
Certified Residential Specialist (CRS)

(408) 892-5763

Robin@RobinBezanson.com

Search for Homes for free!

RobinBezanson.com

Mobile Phone Search:

RobinsNestFinder.com

CA DRE #01377140

Oakville Properties

Excel Auto Body & Paint
40 East Luchessa Avenue
Gilroy, CA 95020

408.848.excel



Scott Lynch, Owner



Best
wishes
for a
great
season!

excel

Auto Body & Paint

RESTORING PEACE OF MIND



A message from SVCT's President

Welcome to SVCT's adult comedy, *Out of Order*. That's right, if you brought the children, you're going to have some 'splainin' to do.

Out of Order premiered in Leatherhead, Surrey in 1990 (home to actor and art patron Michael Caine), apparently on a "trial-run" basis before moving to London's West End. It then enjoyed a long run at the Shaftesbury Theatre in London where author Ray Cooney sponsored the Theatre of Comedy Company. In 1991, the play won the Laurence Olivier Award for Best New Comedy, putting it in the same august company as plays like *Middle-Age Spread* (1979), *Up 'n' Under* (1984), and *Popcorn* (1998). According to Wikipedia, in 1997 the play was made into a "successful Hungarian movie" called *A Miniszter Felrelep, ...* apparently in Hungarian. Oh yes, and there's a "BollyBroadway" adaptation for those wanting an Indian setting.

That's it. That's all I got. I tried to sound educated, but the jig is up. In fact, I've never even heard of most of those plays, and since neither John Wayne nor Nick Cage starred in *A Miniszter Felrelep*, there's no chance I saw it. On the other hand, I did see SVCT's last excellent farce, *Noises Off*, which also won the Olivier Award (1982). The practical similarity in *Out of Order* is the need to pay attention, because there's no instant replay, and a farce depends on accelerating pacing and a skillfully exploited absurd situation. By that definition, this play already is a modern classic that you're sure to enjoy. Indeed, our skilled and committed (or should have been committed) cast and crew hope you have as much fun watching it as they have doing it for you.

Hey, we're announcing the new season to begin in September! If you're reading this before March 12, please join us right here at the Playhouse on that evening starting at 6:30 pm for our annual members' meeting and new season preview. We'll even serve dessert. If you're reading this after March 12, check our website or stay tuned for the new season announcements. Incidentally, we always need new members of the board of directors willing to bring whatever valuable skills, experience and energy they can to our all-volunteer organization. It's a fun form of community service and cooperative learning; and we're not intimidating, stuffy, cliquish, or closed-minded. Well, most of us. Okay, most of them. If you're tempted by this kind of role, surprise yourself and let us know.

See you beginning June 15 for *Wizard of Oz*. Mark your calendar now. You won't want to miss it.

Rob Christopher, South Valley Civic Theatre President



Morgan Stanley Smith Barney is proud to sponsor
South Valley Civic Theatre

Greg Edgar

First Vice President

Wealth Advisor

333 W San Carlos Street, Ste 1100

San Jose, 95110

408-947-3749

Greg.Edgar@MSSB.com

**MorganStanley
SmithBarney**

A Morgan Stanley Company



ACT ONE

Suite 648
The Westminster Hotel
London

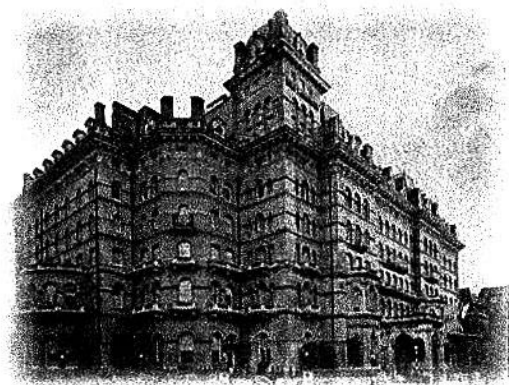
“You know, this feels really naughty Mr. Willey”
Jane Worthington

INTERMISSION

ACT TWO

Suite 648
The Westminster Hotel
London

“Oh Richard, I’ve had such a bang
Pamela Willey”





Creative work that works.

articulate-solutions.com

- Logos & brands
- Websites
- Advertisements
- Illustrations
- Signs & banners
- Publications
- Marketing strategies



Award-winning communications and design work since 1991

Articulate Solutions®
A CORPORATION



Margaret Thatcher served as Britain's Prime Minister three continuous

terms, 1979 to 1990.

She is the country's longest-serving premier since Lord Salisbury. Her economic policies and approach to politics were branded "Thatcherism." In 1990 she resigned after a leadership election within the Conservative party.

In 1992 she was raised to the peerage, taking her seat in the House of Lords as Baroness Thatcher, of Kesteven in the County of Lincolnshire. In

1995 she was raised to the Order of the Garter.

Citation:
www.parliament.uk



Bill Tindall
408.781.4967

brotindes@aol.com
www.BrotinDesigns.com



Parliament examines what the Government

is doing, makes new laws, holds the power to set taxes and debates

the issues of the day. The House of Commons and House of Lords each play an important role in Parliament's work. www.parliament.uk

The Cast

Richard Willey

The Manager

The Waiter

The Maid

Jane Worthington

The Body

George Pigden

Ronnie Worthington

Pamela Willey

Nurse "Gladys" Foster

The Window

John Brewer

Allen Siverson

Bill Tindall

Christine McElroy

Dencee Lewis Bohnsack

Kel Whisner

Doug Doughty

Rob Ingenthron

Roberta Vinkhuyzen

Sandra Aranda

Trudy Parks



Special Thanks

South Valley Civic Theatre is a not-for-profit organization run by dedicated volunteers and is funded by ticket sales and generous sponsors and advertisers. Their combined contributions of money, talent, and time bring great theater to the South Valley. We thank them all. But mostly, we thank you, our audience!

Scott Lynch & Marie Haluza, *Producers*

Starritt Construction for saying 'yes' and then following through and building our incredible set.

Martin Baccaglio for making warehouse space available ~ affordably.

Booksmart for their ongoing support of SVCT and for selling our tickets!

South Valley Internet for hosting the SVCT web site.

Mainstreet Media (The Gilroy Dispatch & The Morgan Hill Times)

for giving our shows special consideration in their newspapers.

Christopher Ranch for providing transportation for our set.

Johnson Lumber for donating our lobby fireplace.

Tomasello Flooring for carpeting for the set.

Orchard Supply Hardware for discounted paint.

Rosso's Furniture for repeatedly loaning beautiful furnishings for SVCT's productions.

Excel Auto Body & Paint for making some of our older set pieces look new.

Banning Upholstery for facelifting the ottoman for Suite 648.

GILROY
DISPATCH

MORGAN HILL
TIMES



STARRITT CONSTRUCTION INCORPORATED

General Contractor Lic. #457668

WWW.STARRITTCONSTRUCTION.COM

MARK STARRITT
7467 EIGLEBERRY STREET
GILROY, CALIFORNIA 95020

OFFICE: 408-842-8253

CELL: 408-804-3591

FAX: 408-847-1501

EMAIL: MARKSTAR@GARLIC.COM





The Staff

Co-Producer	Scott Lynch
Co-Producer	Marie Haluza
Director	Jo Anna Evans
Director's Assistant	Lauren Colwill
Set Design	Scott Lynch
Set Engineer	Wayne Dewey
Scenic Artist	Glynis Crabb
Costumer	Zana Vartanian
Master Carpenter	Mark Starritt
Set Construction Crew	Timer Starritt, Steve Salerno, & Richard Marcotte
Set Painters	Sandra Aranda, Denee Lewis Bohnsack, Sabrina Bohnsack, Marie Haluza, Rob Ingenthron, Scott Lynch, Bill Tindall, Roberta Vinkhuyzen, & Kel Whisner
Set Decor	Cassin McClairn & Bill Tindall
Props Coordinator	Christine McElroy
Stage Manager	Brandon Moralez
House Manager	Beth Dewey
Lobby Design	Marie Haluza & Whitney Pintello
Light Design & Set-up	Matthew Hendrickson
Light Board	Haylee Merrill & Jed Metzger
Sound Design & Set-up	Ray Trimble
Sound Board	Jed Metzger & Haylee Merrill
Photography	Joshua Works & Patrick Lauder
Load In Team	Peter Aranda, Sandra Aranda, Denee Lewis Bohnsack, Sydney Bohnsack, Beth Dewey, Dale Haluza, Jason Harris, Robin Harris, Richard Marcotte, Jamie McCain, Trudy Parks, Timer Starritt, Pascale Vinkhuyzen & Roberta Vinkhuyzen

A & L Heating and Air Conditioning

Specializing in residential and light commercial buildings

Mike Lommatzsch
Owner

Serving the South County Area Since 1989

408-369-0222

mpl@ix.netcom.com

Sales and Service since 1961



Owned And Operated By NRT LLC.

KEVIN TRENBERTH
REALTOR®, DRE # 01459652
(408) 848-7950 DIRECT
(408) 848-2800 BUSINESS
(831) 801-4381 CELL
(408) 848-3789 FAX
kevin.trenberth@cbnrcal.com



RESIDENTIAL BROKERAGE
8050 Santa Teresa Blvd., Suite 210
Gilroy, CA 95022

www.camoves.com/kevin.trenberth

SIDERITS WOODCRAFT, INC.

CUSTOM CABINETS
PRE-HUNG DOORS ✱ TRIM & HARDWARE

Mark Siderits

msiderits@sbcglobal.net

(408)683-2518 ✱ Fax (408)683-0183
170 South Street, San Martin, CA 95046

THE LAW OFFICES OF
JAMES A. WARD
J.D., LL.M. ESTATE PLANNING

Jim Ward
jward@wardesq.com
☎ 408-847-4800
☎ 408-847-4881
www.wardesq.com

ELDER LAW & ESTATE PLANNING

7810 Monterey Street, Gilroy, CA 95020



Parliamentary Private Secretary (PPS), the

position help by our beloved George Pigden, is a role given to a United Kingdom or New Zealand Member of Parliament (MP) by a senior minister in government or shadow minister to act as their contact for the House of Commons; this role is junior to that of Parliamentary Under-Secretary, which is a ministerial post, salaried by one or more departments.

PPSs can sit on Select Committees but must avoid "associating themselves with recommendations critical of, or embarrassing to the Government", and must not make statements or ask questions on matters affecting their minister's department.





Sandra L. Aranda ~ Nurse "Gladys" Foster

Out Of Order is Sandra's third performance with SVCT. Most recently, she was seen in *Damn Yankees* as a member of the ensemble and the *Chase Ridge Fan Club*. Her first adult theater performance was as "Mrs. Sarah Brady" in the SVCT's production *Inherit The Wind*. Sandra is a speech-language pathologist with the Oak Grove School District and also runs a private speech business, Aranda Speech & Language, here in Morgan Hill. Her other passions include spending time with her parents and many animals, reading, doing art, and exercising (aqua aerobics, training for her next half-marathon, and weight lifting). She would like to thank her parents and many supportive friends who are always there for her and listen to her practice and talk about the theater MULTIPLE times. Enjoy the show!



Denee Lewis Bohnsack ~ Jane Worthington

The last time Denee was on SVCT's stage, Margaret Thatcher was Britain's Prime Minister. Denee has performed for a variety of theaters in the Bay Area. Her most recent work has been with Pintello Comedy Theater, where she played a very pregnant "Frankie Futrelle" in *Christmas Belles* and a red-nose wearing "Val" in Norm Foster's *Looking*. Other favorite roles include "Whitney" in *A Piece of My Heart*, "Rosalind" in Williams Shakespeare's *As You Like It*, and "Janet" in *Boeing, Boeing*. Denee would like to thank her family, especially her husband, for all their love and support while she continues her acting endeavors.



John Brewer ~ Richard Willey

In his fifteenth show with SVCT, John is playing his sixth Englishman for us from a long list of others. Since 1986 John has plied his accents from Irish to Russian to Texan on stages from Pacifica to San Mateo to Gilroy. Preferring musicals, John has been the Plant in *Little Shop of Horrors*, Cinderella's Prince in *Into the Woods*, and Henry Higgins in *My Fair Lady* to name a few. Despite forays into drama like SVCT's *Ten Little Indians*, or Odyssey's *The Miracle Worker*, he also has a comic side as seen previously in SVCT's *Blythe Spirit*, and at Pintello Comedy Theater in *Office Hours* and *The Murder Room*. Next month you can catch him in *Pageant* also at Pintello Comedy Theater.



SVCT Announces the 2012-2013 Season's Productions

**Join us at our annual
Membership Meeting,
Monday March 12 at 6:30
p.m.**

**Morgan Hill
Community Playhouse
17090 Monterey Street
Morgan Hill, CA 95037**

Until then...

It's all hush-hush



**networking &
business communication**



The bowler hat, also known as a coke hat, derby (US), billycock or bombin, is a hard felt hat with a rounded crown originally created in 1849 for the British soldier and politician Edward Coke, the younger brother of the 2nd Earl of Leicester. The bowler hat was popular with the working class during the Victorian era though it came to form the official work uniform of bankers. The bowler hat was devised in 1849 as a close-fitting, low-crowned hat to protect gamekeepers' heads from low-hanging branches while on horseback. The keepers had previously worn top hats, which were easily knocked off and damaged.

When the first customer arrived in London on 17 December 1849 to collect his hat he reportedly placed it on the floor and stamped hard on it twice to test its strength; the hat withstood this test and Coke paid 12 shillings for it.



Doug Doughty ~ George Pigden

Out of Order is Doug's fifth show with SVCT -- most recently appearing as the acerbic "Hornbeck" in *Inherit the Wind* and another reporter character in *Curtains*. Well, at least this role has nothing to do with journalism. This has been a wonderful cast and staff with which to work. Doug hopes you enjoy the show and do not spend too much time looking for all those Harvey-Korman/Tim-Conway moments. Finally, he challenges the audience to a drinking game -- every George "OMG" requires knocking back a shot of your favorite rotgut (get it at the concession stand). Cheers!



Rob Ingenthron ~ Ronnie Worthington

Rob has performed in only one play for SVCT, *You Can't Take It With You*. However, he choreographed the dance scenes for *Annie Get Your Gun* and has been performing for audiences for over 20 years.

As a professional dancer and instructor, teaching primarily Country and West Coast Swing, Rob really got hooked while performing at dinner shows and doing skits for dance events across the country. He has also performed in the United Kingdom. Comedy skits and improvisational comedy are what Rob enjoys most, so he's looking forward to some amusing moments in this play, which he trusts everyone will enjoy!

OREA State Certified

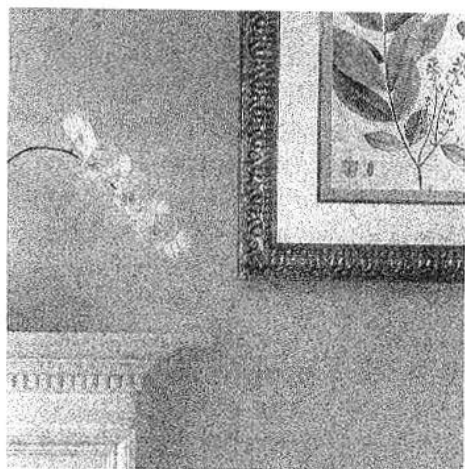


ALLEN SIVERSON
Independent Real Estate Appraiser

Phone: 408-848-2924

Fax: 408-848-2925

E-Mail: allensiv@ix.netcom.com



*Experience the Difference of Custom Framing
at its Best*

You'll love our high quality materials, original designs and FAST turnaround.

Downtown Morgan Hill
17505 Monterey Road
(Corner of 1st St)
(408) 776-3056

\$50 Gift Certificate

Present this certificate and receive \$50 off your next custom framing order.

Must present valid, unexpired gift certificate for services. Not valid for cash. Cannot be used in conjunction with any other offer. May vary on stock to program.

FASTFRAME
EXPERT PICTURE FRAMING

*Design & Craftsmanship,
Your Total Satisfaction Guarantee.*

www.fastframe.com • Over 300 Locations Worldwide

Pintello Comedy Theater

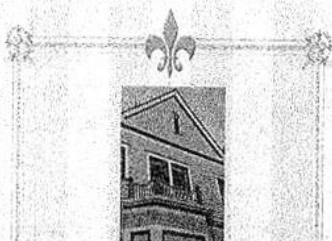


**THE MUSICAL COMEDY
BEAUTY CONTEST!**

Coming April 20th!

visit us at www.PintelloComedy.com
or on facebook for more info!

8191 Swanston Lane, Gilroy CA 95020 408.337.1599



the Pixley house

Scott Lynch

60 West 5th Street
Gilroy, CA 95020
Tel: 408.761.1330

Scott.Lynch@thePixleyhouse.com
www.thePixleyhouse.com

*Offices and
Meeting Rooms for
professionals.*

*Periodic or
Dedicated Use*

T1 Internet Access

back·bench



(bæk bēnch)

n.

1. *Chiefly British* The rear benches in the House of Commons where junior members of Parliament sit behind government officeholders and their counterparts in the opposition party.



Christine McElroy ~ *The Maid*

Christine got involved in theater in 1993 after moving to Gilroy from her hometown of Los Angeles. Her first show was SVCT's *Anything Goes* in which she performed as a chorus member - having just a few lines. Over the years she has worked with many local theater groups - including several roles with SVCT, Pintello Comedy Theater, and most recently, Limelight Actors Theater. She has played "Claire Ganz" in Neil Simon's *Rumors*, "Catherine" in *The Foreigner*, "Aneese" in *Belles* and "Megan" in *Flights*. Christine is pleased to be back with SVCT in *Out Of Order* with both old and new friends. Enjoy the show and have a romping good time. Watch out for the window!



Trudy Parks ~ *The Window*

Trudy has been involved with South Valley Civic Theatre since 2007 and is excited to be part of *Out of Order* and work with such a talented cast and crew. She also has been seen on stage in *Scrooge*, *It's a Wonderful Life*, *Annie Get Your Gun*, *The King and I*, *Curtains*, *Inherit the Wind* and most recently, *Damn Yankees*. Trudy has co-produced the award winning shows *Into the Woods* and *Anything Goes*. She is now serving her fourth term on SVCT's Board of Directors. She would like to thank her family for putting up with her many hours away from home while doing SVCT activities. Most importantly, Trudy hopes you enjoy the show!



Allen Siverson ~ *The Manager*

This is Allen's second appearance with South Valley Civic Theater, most recently appearing in *Inherit the Wind* as "Matthew Harrison Brady". Previous theater experience includes *The Old Crow*, a one-act play that he wrote and in which he acted. Allen is very pleased to return to SVCT and to perform with the friends he has made here.

INTERO
REAL ESTATE SERVICES



Patty Filice
Broker Associate
DRE# 01081677

175 E. Main Avenue, Suite 130
Morgan Hill, California 95037
PattyFilice@gmail.com
OFFICE 408.778.7474
CELL 408.710.2259
FAX 408.516.9857
www.PattyFilice.com

DIRECT 408.201.0165



**QUICK
WORKS**
photography

Joshua Works
photographer

408.592.7182
quckworksphoto.com
joshua@quckworksphoto.com

LIMELIGHT
ACTORS THEATER

"Theater...With a Twist"

Gilroy's Downtown Theater Presents

WEEKEND COMEDY

By Jeanne and Sam Bobrick

Two Couples, Two Generations, One Cabin.

It's going to be a long weekend...

Starring Carol Harris, Dave Leon, Dana Morgan and Bill Tindall

April 27th through May 19
www.LimelightActorsTheater.com
Reservations 408-472-3292

Performing at the Gilroy Center for the Arts

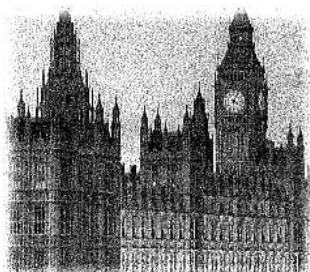
Produced by special arrangement with Samuel French, Inc.

Break A Leg S.V.C.T!

11



Lord Neil Kinnock,
Labour Party
Secretary of State for
Employment 1974-75,
Principal Opposition
Spokesperson for
Education 1979-83,
Leader of the
Opposition 1983-92,
Labour Party NEC,
Member - 1978-94,
Chair - 1987-88,
Labour Party Leader
1983-92,
Member - BBC
Advisory Council
1976-79,
Chair - British
Council 2004-09,
Raised to the peerage
as Baron Kinnock, of
Bedwelty in the
County of Gwent
2005
[www.parliament.uk/
biographies/neil-
kinnock](http://www.parliament.uk/biographies/neil-kinnock)





Bill Tindall ~ *The Waiter*

Born on the Mississippi delta, Bill made California his home in his twenty-third year. An Interior Designer, he found a new passion in theater in 2007 performing in *Boeing Boeing* at Pintello Comedy Theater. From then, on to SVCT as an actor in *Arsenic and Old Lace* and *You Can't Take It With You*. Serving on the SVCT Board of Directors, Bill produced *The King and I*, and *Annie Get Your Gun*. Recently, Bill appeared in Limelight Theater's *Norman, Is That You?* and will soon return to their stage in *Weekend Get Away*.



Roberta Vinkhuyzen Rasmussen ~ *Pamela Willey*

This is Roberta's third production performing with SVCT. However, she is still in recovery from co-producing the recent teen musical smash *On The Town*. Being a part of the *Out Of Order* cast has been pure fun and laughter. She thanks the very talented cast and crew for their hard work and dedication. It's been a pleasure! Roberta teaches the Oakwood High School Vocal Ensemble and sings in a local jazz combo. She thanks her husband, Erik, and 3 children (Saskia, Pascale & Lukas) for their love and support throughout the process of bringing *Out Of Order* to the stage.



Kel Whisner ~ *The Body*

Kel plays a dead body in *Out of Order*; unfortunately it appears his eighth performance with SVCT may be his last. He had always thought that it would be nice to be wanted for his body, but this teaches one to be careful what one wishes. Kel asked that he be remembered for his livelier performances in *It's a Wonderful Life* and *You Can't Take it With You* or his role as the inspiring coach "Benny Van Buren" in *Damn Yankees*. Sad to think he won't be joining his ball players next season. Kel leaves us with his wise words, "Live life to the fullest, enjoy today, and appreciate family and friends."





**Keeping Pools
Bright and Blue
Since 1992**

RESIDENTIAL • COMMERCIAL

[408] 710.6186

www.allseasonspoolservice.net

Stems

Floral Boutique
Flowers/Home Decor

Diana Rasta
owner/florist

423 Vineyard Town Center
Morgan Hill, CA 95037

P: 408-776-6811
F: 408-776-6822

diana@stemsfloralboutique.com



Clapham Common is an 89 hectare (220 acre) triangular area of grassland situated in south London, England. It was historically common land for the parishes of Battersea and Clapham, but was converted to parkland under the terms of the Metropolitan Commons Act 1878.

DIESEL SPECIALIST

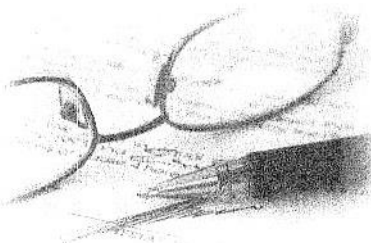
- Ford
- GM
- Dodge
- All imports

MAINTENANCE SERVICE
FOR ALL MAKES & MODELS



- Complete Diagnostics
- Brake Service
- Brake & Lamp Inspections
- Smog Station
All Vehicles
including Motor Homes, Diesels & Large Trucks

20 East Luchessa Ave., Gilroy • 408.842.0663



Law Offices of Kimberly Lynch

Specializing in
Family Law & Child Welfare

1559 The Alameda, Suite 301

San Jose, CA 95126

408-298-3894

The Staff



Scott Lynch ~ Co-Producer

Out of Order is Scott's second producing venture with SVCT; the first being the 2011 presentation of *Curtains*. Early in 2011, he had the pleasure of stage managing as his daughter Abbey performed in *Robin Hood & Friends*. Otherwise, Scott's time has been on stage, first playing "George Bailey" in the 2008 holiday production of *It's a Wonderful Life*, "Kolenchov" in *You Can't Take It With You*, "Chandler Marlowe" in *The Butler Did It*, and "Reverend Jeremiah Brown" in *Inherit the Wind*. Scott has also performed with Limelight Actor's Theater. His hope is that *Out of Order* gives you two full hours of laughter and leaves you with a smile after the show.



Marie Haluza ~ Co-Producer

Marie returns to SVCT after a 7 year absence. *Out of Order* marks her 7th adventure as Producer. Marie produced 5 shows while an SVCT Board member from 1999-2005. Of all her shows, one of her fondest memories was co-producing Morgan Hill Community Playhouse's inaugural show - "Lend Me A Tenor" in 2003. When not working on shows, Marie spends her daytime hours as an IT Project Amin at Fox Racing in Morgan Hill.



Jo Anna Evans ~ Director

Jo Anna has directed several shows for SVCT and has been in numerous SVCT productions; *Lend Me A Tenor*, *Blythe Spirit*, *Annie*, *Company* and many others. She has also performed and directed for Limelight Theater and has been in several Pintello Comedy Theater productions. She has a Masters degree in theater and once upon a time worked for Missouri Repertory Theater Company. By day she has a thriving counseling practice in Sunnysvale and by night enjoys her passion of community-based theatrical production. She would like to thank her husband, Ed for his unfailing encouragement and support and would like to apologize to him for his basically being a bachelor for the last 8 weeks!

The 2011 – 2012 SVCT Board of Directors

Rob Christopher		President
Beth Dewey		Past President
Ray Trimble	Vice President ~	Box Office
Robin Bezanson	Vice President ~	Publicity
Robin Harris		Secretary
Max Bushman		Treasurer
Terri Miles	Vice President ~	Membership
Rob Bezanson	Mary Doktor	Trudy Parks
Greg Colbert	Beric Dunn	Lisa Quijano
Carol Harris	Scott Lynch	Kathy Tom
Glynis Crabb	Peter Mandel	



How *far* is Felixstowe from Lewisham? About 89 miles. Felixstowe (Sir John Mills did some growing up here) is a seaside town on England's east coast. Lewisham (well, Forest Hill to be exact) is home to Leslie Howard (Ashley Wilkes of *Gone with the Wind*). Citation: wikipedia.org



Webb & Associates
We create the positive spin

You

Webb And Associates creates winning communication strategies for you to build your business, showcase a product, or bring media attention.

We

Webb & Associates offer experts educated in the latest communication tools such as social media and tweeting.

US

We believe in partnerships. We are with you every step of the way.

Webb & Associates Public Relations webbpr@webbpr.info 408-607-3113

2012 – 2013 South Valley Civic Theatre Members

Benefactor

Martin Baccaglio Chalgren Industries Don and Karen Christopher
Robert and Ginny Christopher Beth and Wayne Dewey Out & About Magazine

Sponsor

Mary Beth & Jeff Anderson The Barham Family Bill and Ruby Hart

Patron

Peter & Elena Anderson Glynis Crabb The Mandel Family
Johanna, Grandie Jackson, Amazing Grace, Maggie May, Jeddie Sweet Boy Gil Family

Family

Mr. & Mrs. Allen	Virginia and Richard Helme	The Quijano Family
The Benitez Family	The Hernandez Family	DaVette See Family
The Bezanson Family	The Inderhees Family	The Sepuleved/Merrill Family
Margaret and Don Bianucci	Rob & Tina Ingenthron	Barbara and Chuck Smith
The Borgia Family	Diana & Rich Kaiser Family	The Snook Family
The Bushman Family	The Knappe Family	The Sperry Family
The Carrillo Family	Janie and Rodger Knopf	Mark & Cheryl Thompson Family
The Clifford Family	The Kogan Family	John & Rose Tom Family
The Colbert Family	Charles & Janice Krahenbuhl	Larry & Kathy Tom Family
The Doughty Family	Nicole Lajeunesse	Ray and Mary Trimble
The Dunn Family	The Lewandowski Family	The Vinkhuyzen Family
Zack Goller	Scott Lynch	Cynthia Wheat Family
The Hamilton Family	The Mallette Family	The Walling Family
Harvey & June Hammer	Linda and David Matuszak	Kel Whistler Family
The Harnett Family	The McElroy Family	Meg & Kelly Williams Family
Jason and Robin Harris	The McGill Family	Robert Zeiher
	The Miles Family	

Individual

Reynaldo Alcantar	Esperanza Dela Torre	Carol Harris	Danielle Moore
Sandra Aranda	Angela Dilloughery	Samuel Huelzo	Calvin Nuttall
Joe Bailey	Danielle Dokter	Fred Koehler	Fernando Ortega
Joseph Biafore Jr.	Peder Eriksson Jr.	Dominick Lucido	Trudy Parks
Brittani Bombino	Rosalind Farotte	Stephanie Marquez	James Pearson
Colette Bowen	Mark Gaetano	Valarie Martin	Kaitlin Rooney
Nanci Brand	Elisabeth Gonzales	Julie Masterson	William Rummold
Anthony Briggs	Megan Griffin	William Mealor	Allen Siverson
Helga Brooks	Alexandra Hannon	Kevin Miles	John Soto Jr.
Melissa Cachopo	Patricia Hannon	Mckenna Miles	Christopher Souza
Roos de Vries			Jon Szczepaniak

THE TRADITION OF THE GYPSY ROBE

Each SVCT production awards the “Gypsy Robe” to a cast member who has made special contributions of time and energy towards the good of the show. It is presented to the recipient on opening night at which time they don the robe and bless the stage before the opening curtain. It is the recipient’s charge to affix to the robe a patch that signifies this show. The Gypsy Robe is then returned closing night to await another show and to perpetuate its tradition.

The producers of *Out of Order* are pleased to present the Gypsy Robe to:

Bill Tindall

Radwan Pediatric Dentistry

"Our office
strives to provide
the best possible
environment for the kids,
while maintaining a
friendly and professional
atmosphere for their
parents"
- Dr. Yahya
Radwan, DDS

Sunnyvale Office

1298 Kifer Road,
Suite 506
Sunnyvale, Ca
408-736-3500

Morgan Hill Office

17705 Hale Ave,
Suite A5
Morgan Hill, Ca
408-779-2747

Call us today to set up a consultation!



Yahya Radwan, DDS

Diplomate, American Board of Pediatric Dentistry

Like us on Facebook!

www.facebook.com/radwanpediatricdentistry

For more information and New Patient Packet visit:

www.bayareakidsdentist.com

All Jokes Aside ...



here's what is happening behind our windows.

Fresh Seafood
Steaks • Pastas
Kids Menu
Full Bar
Draft Beer
Daily Specials

SATURDAY Sunset Saturday
\$5 Appetizers (4-6pm)


SUNDAY No Corkage Night

MONDAY Mini Seafood
Tostado and Margarita - \$5

TUESDAY Taco Tuesday
\$2 Salmon Tacos (5-9pm)

WEDNESDAY Pint Night
\$2 Draft Beers

THURSDAY Oyster Night
\$1 Fresh Oysters


Rosy's at the Beach
RESTAURANT