

2019 HOLIDAY COMEDY

Final Show #43

# The HALLELUJAH

A Comedy by Jessie Jones,  
Nicholas Hope & Jamie Wooten

Directed By Kevin Heath

*Girls*

**Nov 1, 2, 8, 9, 15, 16, 22, 23, 30**

Fri/Sat 8pm (Doors at 7:00pm)

**Matinees Nov 10, 17, 24 Dec 1**

Sunday 2pm (Doors at 1:30pm)

**Tickets  
\$25**

Produced by special arrangement with Dramatists Play Services Inc.

# LIMELIGHT ACTORS THEATER

Resident Theater Company  
@Gilroy Center for the Arts  
7341 Monterey Street  
Gilroy, CA 95020  
408.472.3292

limelightactorstheater@gmail.com  
www.limelightactorstheater.com

Founder/Artistic Director  
KEVIN HEATH

Producer/ Co-Founder  
ALAN OBATA

Resident Set Artist  
GLYNIS CRABB

Lead Volunteer  
KAREN POGUE

**Voted Best Theater  
South County**  
2012 - 2016 (Out & About Magazine)

**Voted Best Theater  
Gilroy**  
2014 - 2019 (Gilroy Dispatch)



*The Velocity Of Autumn*



MARTIN RANCH  
WINERY  
TRADITION • PASSION • EXCELLENCE

Gilroy Center for Arts



## Our 2019 Season

### Sponsors:

Gerrie & Carl Reinhardt, The Delcrew Family, Marianne Eichenbaum

### Partners:

Gilroy Foundation, The Miliias Restaurant,  
Gilroy Center for the Arts/Gilroy Arts Alliance

### A Special Thank You To:

Michael Perry, Bob Nesheim, C.J. Wallace, Michael Johnson, Karen Pogue,  
Gilroy Welcome Center (Visit Gilroy), Robert Raymond Salon,  
the cast, the volunteers and all of you!

www.limelightactorstheater.com

### Follow us on

Facebook: @limelightgilroy Twitter: @LimelightGilroy  
Instagram: @Limelightgilroy

## Show Info:

### TIME/PLACE

Eden Falls, GA. Present

### SCENES

#### Act 1 Scene 1:

July 4th. An old, abandoned church

#### Act 1 Scene 2:

Halloween. Spa-Dee-Dah Day Spa

#### Act 1 Scene 3:

Christmas. Spa-Dee-Dah Day Spa

#### Act 2 Scene 1:

January. Spa-Dee-Dah Day Spa

#### Act 2 Scene 2:

Valentines Day. Spa-Dee-Dah Day Spa

#### Act 2 Scene 3:

July 4th. Spa-Dee-Dah Day Spa



Directed By  
Bill Tindall and Tiffany Goller

Steel  
Magnolias

NOV 15 - DEC 7 2019 WWW.SVCT.ORG

LIMELIGHT presents

# The Hallelujah Girls

By Jessie Jones, Nicholas Hope & Jamie Wooten

TIME  
Present

## CAST

**Carlene.....Christy Wait**  
**Nita.....Valerie Vanni**  
**Mavis.....Jo Anna Evans**  
**Sugar Lee.....Denee Lewis**  
**Bobby Dwayne.....Doug Doughty**  
**Bunny.....Robin Harris**  
**Porter.....Kevin Heath**

## CREATIVE TEAM

**Producer/House Manager.....Alan Obata**  
**Director.....Kevin Heath**  
**Assistant Director.....Christine McElroy**  
**Set Artist.....Glynis Crabb**  
**Set/Tech/Costume Design.....Kevin Heath**  
**Tech Booth.....Alan Obata**

**There will be a 15 minute intermission between  
Act 1 and Act 2**

Run time is approximately 2hrs 15 mins with intermission

### PLEASE TURN OFF ALL CELL PHONES

A CELL PHONE RINGING DURING A PERFORMANCE CAN NEGATIVELY AFFECT THE SHOW AND IS INCONSIDERATE TO OTHER PATRONS. RINGING CELL PHONES WILL BE TAKEN.

### PLEASE BE CONSIDERATE WITH CRINKLING BAGS AND CRACKLING PLASTIC WATER BOTTLES DURING THE SHOW

WE WANT YOU TO ENJOY YOUR TREATS AND BEVERAGES DURING THE SHOW, SO MAY WE SUGGEST YOU EMPTY YOUR ROCKY ROAD ON TO A PLATE AND POUR YOUR WATER INTO A CUP *BEFORE* THE SHOW BEGINS. NOISES IN THE AUDIENCE ARE INCONSIDERATE TO OTHER PATRONS AND THE CAST.

*This show was produced by special arrangement with Dramatists Play Services, Inc.*

## ARTIST BIOGRAPHIES



### **Denee Lewis (Sugar Lee)**

is thrilled to be back on the Limelight stage. She has performed some of her favorite roles here at Limelight Actors Theater including Kat in *Mom's Gift*, Brooke in *Other Desert Cities*, and Truvy in *Steel Magnolias*. Denee's other favorite roles include Masha in South Valley Civic Theatre's production of *Sonya and Vanya and Masha and Spike*; Meredith in *First Night* at Pintello Comedy Theater; and Ima in *The Immigrant* at Tabard Theatre Company. Denee's film credits include Tessa in *The Biggest Game in Town* written and directed by John Nava and she can also be seen in the short film *Mother's Milk*. Both movies are available on Amazon Prime Video. Denee feels honored to have been a part of the Limelight family. Working with Kevin and Alan has been a highlight in her acting career. She will miss them dearly, but is very excited for them as they begin this new chapter in their lives.



### **Jo Anna Evans (Mavis)**

has had the privilege of being involved with Limelight since it's inception. She has both directed and acted in numerous productions. She directed *Barefoot In The Park*, *The 39 Steps*, *The Velocity Of Autumn* and others and has performed as Reverend Mother in *Nunsense*, Ouiser Boudreaux in *Steel Magnolias*, Connie in *Exit Laughing*, and many others. It is bittersweet to be in Limelight's very last production but she is very thankful that Kevin Heath gave her one last chance to be publicly cantankerous (something she would never do in her private life.) JoAnna is a therapist by day and theater junkie by night and she will dearly miss working with the wonderful people associated with Limelight Actors Theater. As always she wishes to thank her patient husband who has been abandoned for the last 6 weeks. And she wishes to thank the patrons of Limelight who have been there clapping through the years. Thank you and Namaste.



### **Valerie Vanni (Nita)**

returns to Limelight Actors Theatre after performing in last seasons *The Savannah Sipping Society*, and is thrilled to be part of this last season. She has previously performed with Pintello Comedy Theater in *Rumors*, *Christmas Belles*, and *Belles*. Odyssey Theater Company in *Quilters* and *Anne Frank*. Center Stage in *Starting Here Starting Now*. Some other favorite other credits include *A Midsummer Nights Dream*, *Follies*, *Company*, *Gypsy*, *Carnival* and *The Effect of Gamma Rays on Man-in-the-Moon Marigolds*. Along with her love of theater she also has a passion for travel. Finally she would like to thank Kevin and Alan for giving her an opportunity to be part off this Limelight Actors Theater family.

# ARTIST BIOGRAPHIES



## Christy Wait (Carlene)

is delighted to return for her 9th production on the LAT stage, most recently appearing as Sherry in *Belles: The Reunion*. Other LAT roles include Mom (*Mom's Gift*), Ethel Banks (*Barefoot In The Park*), Gingy (*Love, Loss and What I Wore*), Melissa (*Love Letters*), Louise (*Always...Patsy Cline*), Millie (*Exit Laughing*), and Jinx (*The Savannah Sipping Society*) In the 1980's and 1990's, Christy performed major and supporting roles in 12 productions with San Jose Civic Light Opera, winning a record 7 Ginny Awards for her performances. Christy has also graced the stages of Tabard, SBMT, WVLO and as Bev and Jetta in SJ's longest running production, *Angry Housewives*, with San Jose Stage Company. Christy is a retired special education teacher/speech pathologist (MHUSD).



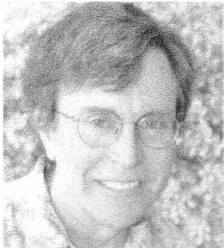
## Heather Bass (Crystal)

says "Jonathan and I always look forward to a call from Kevin in hopes of a chance to bask in the Limelight. And I got the call! What a privilege to be part of this fabulous cast for Limelight's very last show." She enjoyed working with Kevin on stage over the years, and watching all the amazing performances of our very talented community from the audience. Kevin and Allen have been a part of our community fabric, our friends, and generous supporters of the arts. Thank you both for all the fun, laughter and great theater. Jonathan and I raise a glass to you, your contributions to the community and liberty and Justice for all!



## Robin Harris (Bunny)

Hey girlfriends! Robin is shouting "hallelujah" that she gets to share the limelight one more time with this amazing cast and crew! It has been a hare raising experience playing Bunny Sutherland! Among her favorite roles at Limelight have been Annelle in *Steel Magnolias*, Ellen in *MOMolouges* and a cast member in *Love, Loss and What I Wore* and SVCT roles Granny in *Into the Woods* and an Oompa Loompa in *Willy Wonka*. Her absolute favorite role is wife to Jason Harris. (they even played a married couple on stage in *Sylvia* with SBSC - what a stretch!) She sends absolute gratitude to Kevin and Alan for bringing light and lov into the hearts of every one they meet. Kisses from Bunny.



## Doug Doughty (Bobby Dwayne)

It has been an honor to be part of this talented cast in the ultimate Limelight production. Sort of recently, Doug has appeared in *The Odd Couple* (PCT), *Inspecting Carol* (LAT), *God of Carnage* (SVCT), and *Proof* (SVCT). Thank you Kevin for the opportunity to be part of this wonderful community theater.

## ARTIST BIOGRAPHIES



### **Kevin Heath (Porter, Director, Owner, Artistic Director)**

has been involved in theater for over 35 years in New York, Boston and Connecticut. In California, he has had the honor of working with all the local theatres near Gilroy, before taking on his own theatre. His roles have included actor, director, board member, producer and tech. Kevin has directed *Lend Me A Tenor*, *Boeing, Boeing*, *ART*, *Other Desert Cities*, *The Country House*, *The Outgoing Tide*, *Mom's Gift* and many others. He has been involved in the Arts since he was a child. Passionate about the Arts, and about having quality live theater in downtown Gilroy, he created his mission to bridge the Arts as Executive Director of the Gilroy Center for the Arts by day, and Owner/Artistic Director of Limelight, by night. Kevin will retire from the Center November 27, and Limelight December 1.

He would like to thank the cast for their dedication, humor, hard work and for keeping him sane through all the changes! He'd also like to thank Alan for coming on this crazy ride of owning a theatre and Bodhi, The Theatre Dog, for supervising all the set work. Next up....moving to the mountains and unpacking.



### **Alan Obata (Co-Owner, House Manager)**

has been a Realtor/Broker for 30 years in Gilroy and the surrounding area. In 2011 he became co-owner of Limelight Actors Theater and began his first journey into the theatre world. He will still be diligently working on real estate in the Gilroy area in 2020, and adding Tuolumne County real estate to his talents.

Alan would like to thank the cast for joining Limelight on another creative journey, Break a leg!



### **Christine McElroy (Assistant Director)**

is happy to be Assistant Director on Limelight's final show. It is a bittersweet experience working alongside her dear friend (and pseudo brother), Kevin, but she's learning from the best! Christine's acting hobby started in 1993 after her move north from hometown of Los Angeles. She was cast in her first musical as wise-cracking reporter in musical-comedy *Anything Goes*. What was a hobby became a habit. Since then, she's played many parts - her numerous roles include - with South Valley Civic Theatre - as Claire Ganz in *Rumors*, *Follies* (Solange), and as Catherine in *The Foreigner*. Limelight's Berthe in *Boeing, Boeing*, and her favorite role -- 2019's *Belles: The Reunion*, as Roseanne.

Christine has also worked as Producer, Assistant Director, Rehearsal Secretary, and Props Mistress. Thank you to Kevin and Alan for all the wonderful times at Limelight -- behind the scenes, onstage, and in the audience. You created a wonderful theatrical experience and gathering place for our community. Irreplaceable.

## **A Final Show Note from Kevin**

**WELCOME TO OUR 43RD, AND FINAL, PRODUCTION!**

**9 YEARS, 43 SHOWS, OVER 370 PERFORMANCES AND 75 ACTORS....**

Coming off the incredible run of BELLES:THE REUNION, we didn't realize THE HALLELUJAH GIRLS would be our last show. But we couldn't have chosen a more perfect way to leave our audiences laughing.

Life has a funny way of pushing you in the right direction and I have certainly experienced that over the last three months. We went from "planning the 2020 Season" to "we're moving and closing Limelight". It's been a surreal time, to say the least. Rehearsals, packing, moving, concluding my ten years at the Center for the Arts and making plans for our move have become the norm.

We've been talking for over a year on when/how we would end our run with Limelight and move to the next adventures in life. To be honest, we thought we'd end with the 2020 Season. However, in August, the universe lined things up for us now, and it happened much sooner than expected.

The big question is "why are we closing?". Here's the scoop...we are moving to a small town in the Sierra Foothills, where we bought, and renovated, a place almost two years ago. It's only a few hours away, so Alan will still be back and forth to Gilroy selling real estate, and I will be (hopefully) getting into the small, but mighty, theatre and arts community up there. But first, December will bring some much needed downtime to enjoy the holidays with our family and adjust to full time mountain living. I promise everything is fine with our health and well being. The rumor mill has been producing some amusing reasons for our departure, however. I could write a book :-).

We have been honored and humbled by your responses to our closing. It's heartwarming to know we created an experience, and forged a new path that both actors and patrons love and wanted. That makes every minute of this journey worthwhile. Choosing to end our beloved theatre and move from the community we love was one of the most heart-wrenching decisions I have ever made in my life. It created many sleepless nights and teary-eyed days for me, and I couldn't even tell anyone. In the end, the overwhelming instinct telling me this was right, and to go out on top, led us to the decision and here we are. Sometimes you do what you can, as long as you can and then it's time to move the next phase or pass the baton.

I'll miss my job as Executive Director of the Center for the Arts. Being a part of creating this incredible gem in Gilroy will always be one of my fondest achievements. I can't lie, Limelight will be the fondest, though. Every hug, laugh, tear, and award we were fortunate enough to get makes the last nine years extremely special to me. We couldn't have done it without a strong creative team behind us, and I thank every actor, director, artist (THANK YOU GLYNIS!) and tech person who took time out of their lives to help Limelight grow and thrive. Thank you to all of you.

A special note of thanks to our current cast. This team has worked hard to give Limelight a final show that will wow the audience with laughs, start the holidays off right and let us exit gracefully. I can't express how grateful I am, and how proud I am, of Denece, Christy, Jo Anna, Valerie, Heather, Doug and Robin. They were a dream cast to work with. I'm also grateful to Christine McElroy for being here with me every night, offering her keen insight, helping to mold the show and for letting me slide when I got a little over the top in my character. Hey, it's my last role...I'm gonna have fun :-). Thank you all for your hard work!

And thank YOU, our patrons, for the love, the faith and for being part of the Limelight journey. We will miss you dearly.

Now...about passing that baton....oops, gotta go!

Kevin

---



*Condo to Castle*  
— PROPERTIES —



**ALAN OBATA**

REALTOR & BROKER ASSOCIATE

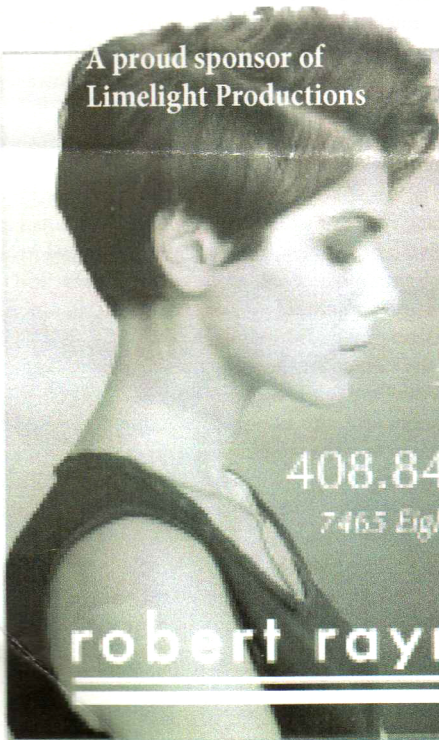
408.406.5448

ALANOBATA@YAHOO.COM

WWW.ALANOBATA.COM

CALDFRS 01034206

A proud sponsor of  
Limelight Productions



Custom  
Hair  
Design

We use and  
recommend  
Jan Marini  
Skin Research  
Products

408.847.1338

7465 Egleberry Street,  
Gilroy

**robert raymond**

Facials  
Make Overs  
Hair

Gilroy Center FOR THE Arts