

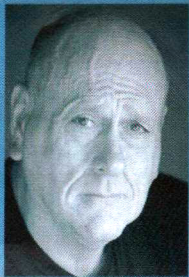
Limelight Presents The Fall 2017 Show

Show # 34 Sept 2017

The Outgoing Tide

By Bruce Graham

Directed by Kevin Heath



Bill Tindall



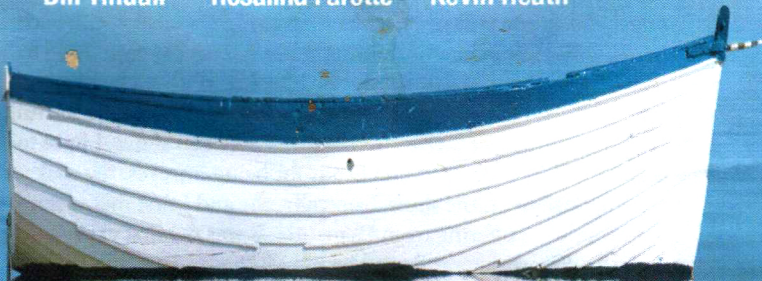
Rosalind Farotte



Kevin Heath

A SKILLFUL, PUNCHY
PIECE THAT CAREENS
EXPERTLY BETWEEN
THE PAINFUL AND THE
COMIC

- *Chicago Sun Times*



Sept 1, 2, 8, 9, 15, 22, 23 8pm
Matinees Sept 10 & 17 2pm

Produced by special arrangement with Dramatists Play Service Inc.

Reserved Seating. Purchase tickets, in advance, online:

www.LimelightActorsTheater.com



TICKETS \$20

BOX OFFICE
408-472-3292

7341 Monterey Street @The Gilroy Center for the Arts (Corner of 7th)

LIMELIGHT ACTORS THEATER

Resident Theater Company
@Gilroy Center for the Arts
7341 Monterey Street
Gilroy, CA 95020
408.472.3292

limelightactorstheater@gmail.com
limelightactorstheater.com

Founder/Artistic Director
KEVIN HEATH

Producer/Co-Founder
ALAN OBATA

Resident Set Artist
GLYNIS CRABB

Resident Master Technician
CJ WALLACE



Voted Best Theater
South County 2012 - 2016
Out & About Magazine
(No longer in publication)



Voted Best Theater Gilroy
2014 - 2017
Gilroy Dispatch



A Note From The Guy In The Glasses....

Kevin Heath
Founder and Artistic Director

Welcome to Limelight Actors Theater!

Since 2011, we have proudly held the titles of **Resident Theater Company at the Gilroy Center for the Arts**, and **Best Theater in South County**. Since its inception in 2014, we have been honored to win **Best Theater in Gilroy** every year. In our current Season, we had the pleasure of producing our first full run Cabaret Show, with over 15 performers. Many of them had never performed with us, and it is an honor to add them to the list of talent making Limelight special. A big thank you to Diane Milo for making it happen. I also want to thank you, our audiences, for your support. You were all so generous that we raised **\$3,200** for the Avon 39 Walk to End Breast Cancer during the Cabaret. Thank you!

It's been a special year so far, and **The Outgoing Tide** is the perfect show to add to our lineage of dramas. We started with a couple of "laughter through tears" shows like **Steel Magnolias** and **Cemetery Club**, and progressed to **ART**, **Other Desert Cities** and **The Country House**. Our current show has been the most challenging drama yet. For me, it's because my father has Dementia and I have watched it ravage his mind, and now body, over the last four years. His verbal skills are gone and he is now in a wheelchair. A once vibrant, tall, handsome Marine and now... I've lived the character of Jack in many ways, and have had the conversations with my mother that you will see. I have such a connection with Bill and Rosalind on stage, and as you will see, they have amazing chemistry with each other. Directing a show and being in it is not my favorite thing to do, to be honest. But this show was different. With such a small cast, we all had a hand in directing this play, so I can't take the full credit. We've laughed, cried and bonded over this show. I have to thank my dear friend JoAnna Evans for being my eyes, my rock and offering insight on the show. Ironically, she and I first met when her Mom was suffering from Dementia. It was my first experience with the disease, later followed by my Mother in Law, and then my Father. So, I had to do this show at Limelight. I had to be Jack. I had to leave the comedy behind this time. I dedicate this show to my Pop, Fred Heath. A little bit Gunner, always a straight shooter and always a supporter of my acting.

We couldn't do this thing called Limelight without you. You may not know it, but our seasons are made possible through ticket sales alone (we do not have members, direct grants or a 200 seat theater to support us). So, we are very grateful for every ticket sale, and for every return visit.

We hope you enjoy our show. Theater is more than just laughter and more than just tears. We feel it should be an experience and strive to create that for you, our audience. Thank you for being here!

-Kevin

LIMELIGHT presents

The Outgoing Tide

by Bruce Graham

Place: The Concannon home on the Chesapeake.
Time: Autumn.

There is one 15 minute intermission between acts.

CAST

(IN ORDER OF APPEARANCE)

Gunner*Bill Tindall*
Jack*Kevin Heath*
Peg.....*Rosalind Farotte*

CREATIVE TEAM

Producer*Alan Obata*
Director*Kevin Heath*
Set Artist.....*Glynis Crabb*
Set Design.....*Kevin Heath*
Tech Design.....*C.J. Wallace*
Light/Sound Operator.....*Matthew Hendrickson*
Dramaturg.....*JoAnna Evans*

PLEASE TURN OFF ALL CELL PHONES.
A CELL PHONE RINGING CAN NEGATIVELY AFFECT THE SHOW
AND IS INCONSIDERATE TO OTHER PATRONS.

Limelight gratefully acknowledges the
Gilroy Center for the Arts/Gilroy Arts Alliance Board,
and every person who helped put this show together.

This show is dedicated to our parents.

*Produced by special arrangement with
Dramatists Play Services, NY.*

duende

(n) the mysterious power of art to deeply move a person

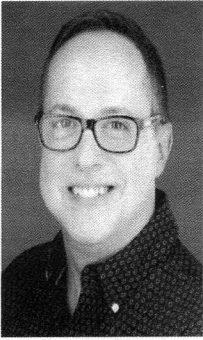
ARTIST BIOGRAPHIES



ROSALIND FAROTTE (*Peg*)

Rosalind is thrilled to share the stage with this cast. She holds a BA and MA in theater arts and has performed with Center Stage, South Valley Civic Theatre, Pintello Comedy Theater, Gavilan College and Limelight Actors Theater. Rosalind was last seen in Limelight's productions of *The Country House*, *Exit Laughing*, *Nunsense*, *Other Desert Cities*, *Rose's Dilemma*, *Love, Loss and What I Wore*, *Love Letters*, *The Outrageous Adventures of Sheldon and Mrs. Levine*, *Cemetery Club* and *Steel Magnolias*. Other credits include *Blythe Spirit*, *King Lear*, *Social Security*, *The Foreigner*, *Noises Off*, *Kitchen Witches*, *Christmas Belles*, *Inspecting Carol*, *Moon Over Buffalo*, *Crimes of the Heart* and *Vanities*.

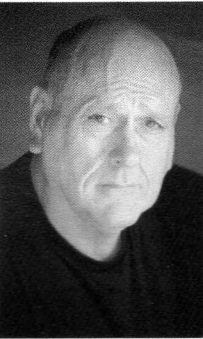
She sincerely hopes that you will enjoy the show. Rosalind will be back on stage at Limelight in September for *Inspecting Carol*.



KEVIN HEATH (*Jack/Director*)

Kevin has been involved in theater for over 35 years in New York, Boston, Connecticut and California. His roles have included actor, board member, director, producer and as of 2011, owner of Limelight. Favorite shows include *Lend Me A Tenor*, *Boeing Boeing*, *ART*, *Other Desert Cities*, *The Country House* and *A Tuna Christmas*. He'd like to thank the cast for their incredible hard work & commitment. It has truly been an honor to work with both of you. He'd also like to thank Alan, for coming along on this crazy journey, and Bodhi The Theater Dog, for waiting up for him on rehearsal nights.

Kevin will be directing the next LAT show, *Inspecting Carol*, opening November 17.



BILL TINDALL (*Gunner*)

Bill is thrilled to return to the Limelight stage and honored to be sharing it with Mrs. Farrotte and Mr. Heath, with this stirring production. He has been on Limelight's stage in *Norman Is That You?*, *Weekend Comedy*, *A Tuna Christmas* and *Red, White and Tuna*. In his absence from LAT he had the incredible good fortune to fulfill a dream of portraying Truman Capote in the one man show *Tru*, thanks to the good people of SVCT. He was voted Best Leading Man for 2015- 2016 Season at their Member's Choice Awards. Trying to hone his acting skills Bill spent the last two summers taking classes at Berkeley Repertory School of Acting under Director Edward Morgan. The lure of the movie camera also came into his life with the short film titled *Boxes*, premiering in September in Morgan Hill from producer Aaron Blas. He hopes you enjoy the performance.

My husband is leaving me. No dramas, no slammed doors - well, OK, a few slammed doors - and no suitcase in the hall, but there is another woman involved. Her name is Dementia.

-Laurie Graham

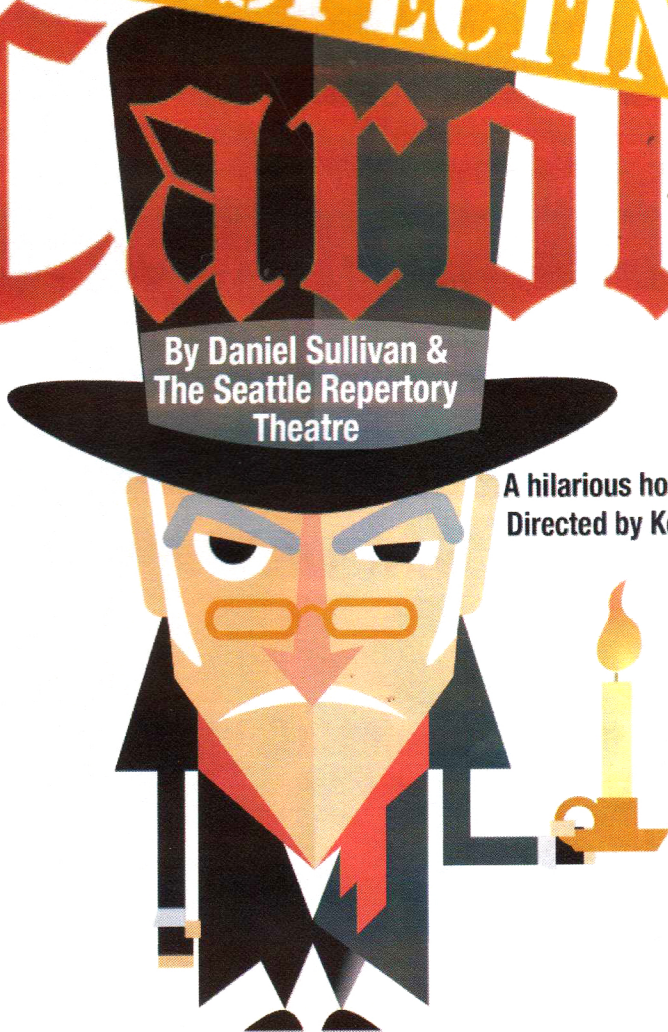
Our **Holiday** 2017 Show

INSPECTING

Carol

By Daniel Sullivan &
The Seattle Repertory
Theatre

A hilarious holiday romp
Directed by Kevin Heath



Produced by special arrangement with Samuel French, Inc.

Nov 17, 18, 24, 25 Dec 1, 8, 9 @ 8pm **Matinees Nov 26 & Dec 3 @ 2pm**

Reserved Seating. Purchase tickets, in advance, online:
www.LimelightActorsTheater.com



LIMELIGHT
ACTORS THEATER
The Bay Area's Bring Your Own
Dinner & Wine Theater

TICKETS \$20

BOX OFFICE
408-472-3292

7341 Monterey Street @The Gilroy Center for the Arts (Corner of 7th)

Starring Dana Morgan, Rosalind Farotte, Dave Leon, Jason Harris, Bruce Pember, JoAnne Engelhardt,
Doug Doughty, Michael Perry, Rachel Perry, Joey King, John Varela and more!

Special Thanks to:

JoAnna Evans...for your insight and love of this play.

**Gilroy Foundation, Marianne Eichenbaum, Pat Wallace,
Gilroy Arts Alliance, C.J. Wallace/Weddingtech Entertainment,
Robert Raymond Salon, Glynis Crabb, The Miliias Restaurant,
Karen Pogue, Ruth & Rick Dyer, Judy Grant, Rachel Perry,
SV News Media (Gilroy Dispatch/SV Magazine)
Bill Tindall, Nob Hill, Gilroy Downtown Business Association,
Gilroy Welcome Center, the volunteers this evening and all of you!**

Receive our email communications by sending a note to:

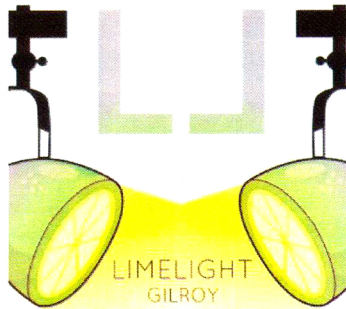
LimelightActorsTheater@gmail.com,

or **sign up** in the **Guest Book at Concessions.**

www.LimelightActorsTheater.com



“Like” us on Facebook and join more than 1,200 fans

Coming in October!



2018 Season Announcement

**Five Shows. Two Musicals. Twenty One Actors.
New Faces & Old Friends On LAT's Stage!**



Condo to Castle
— PROPERTIES —

ALAN OBATA
REALTOR & BROKER ASSOCIATE
408.406.5448
ALANOBATA@YAHOO.COM
WWW.ALANOBATA.COM
CALBRE# 01034206

Intuitive Watercolor Installation

“Reconstructing the Landscape”

Elissa Nesheim
Artist in Residence



WEDDING TECH

C. J. Wallace 408.644.0948
cj@weddingtech.net www.weddingtech.net
Specialty Lighting & Monograms
DJ Services
Photo Booth

Limelight wishes "Break a Leg" to SVCT on their Fall Production!



SOUTH VALLEY CIVIC THEATRE
Presents



FOLLIES

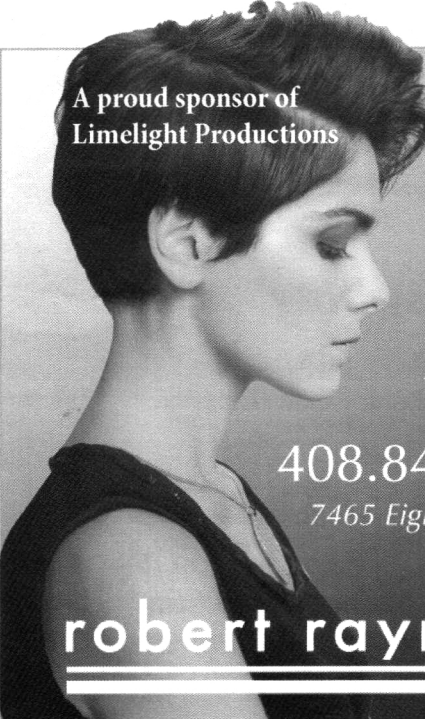
GENERAL \$25 SENIOR \$20 YOUTH \$16

WWW.SVCT.ORG
408.842.SHOW

FRI 8:00PM SEPT 8, 15, 29 / OCT 6
SAT 8:00PM SEPT 9, 16, 30 / OCT 7
SUN 2:30PM SEPT 17 / OCT 1



Resident Company of the Morgan Hill Community Playhouse, 5th & Monterey Streets



A proud sponsor of
Limelight Productions

Custom
Hair
Design

*We use and
recommend
Jan Marini
Skin Research
Products*

408.847.1338
7465 Egleberry Street,
Gilroy

robert raymond

Hair Make Overs Facials